

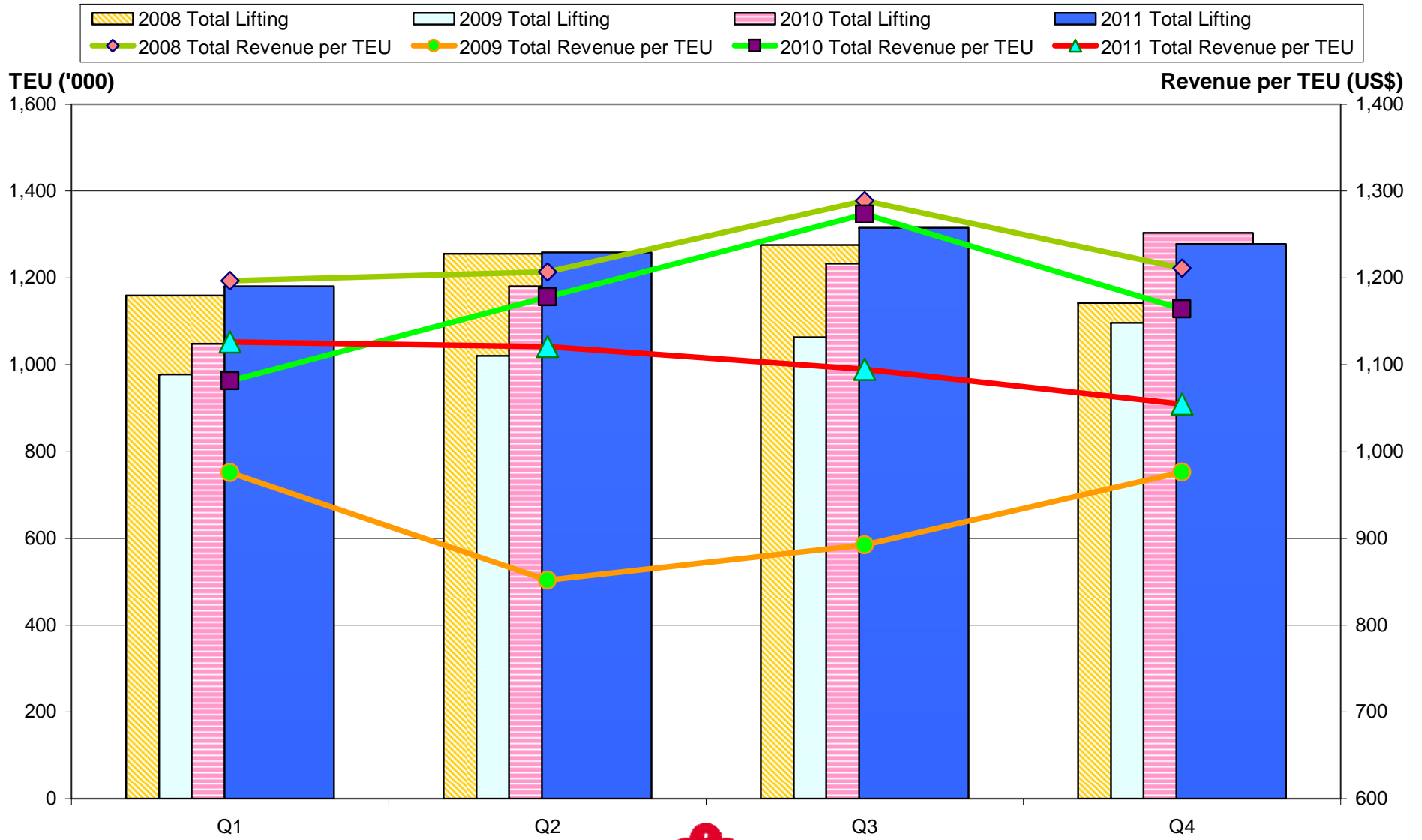
# **Orient Overseas (International) Ltd**

**OOCL Operational Update**

**2011 Q4**

January 20<sup>th</sup>, 2012

# All Trades Liftings and Revenue per TEU\*

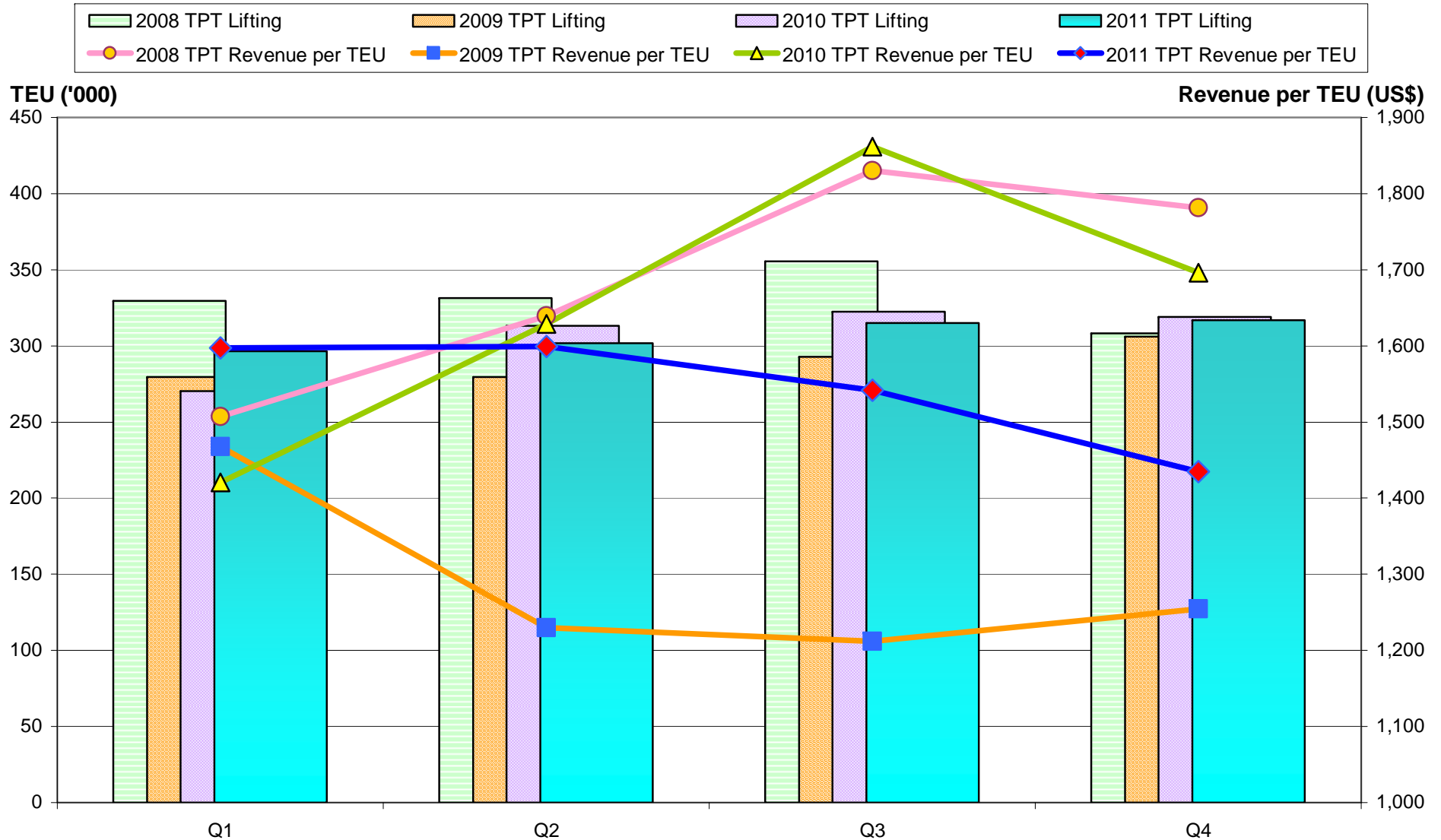


\*Note: Unaudited operational updates



Updated Jan 20<sup>th</sup>, 2012

# TPT Liftings and Revenue per TEU\*

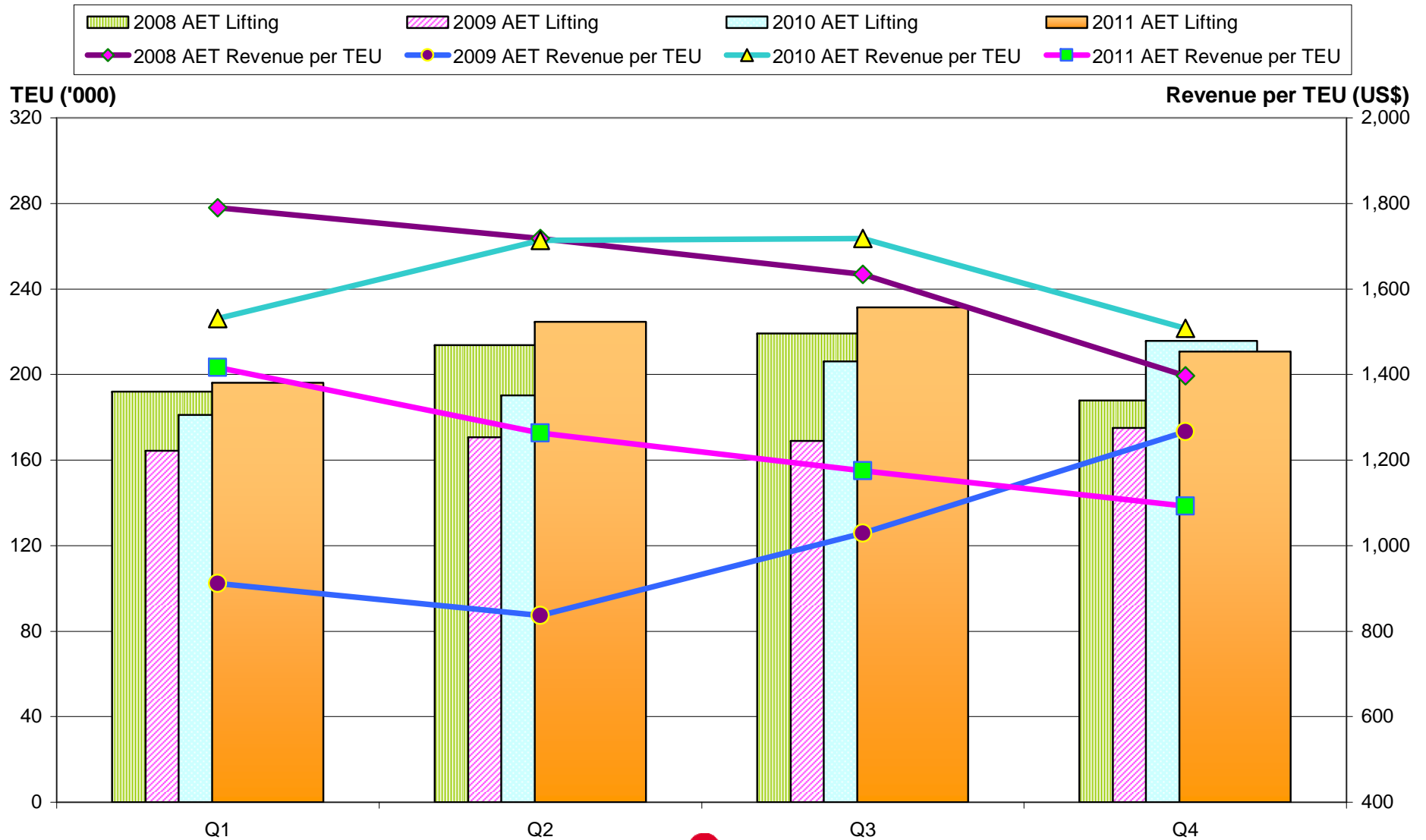


\*Note: Unaudited operational updates



Updated Jan 20<sup>th</sup>, 2012

# AET Liftings and Revenue per TEU\*

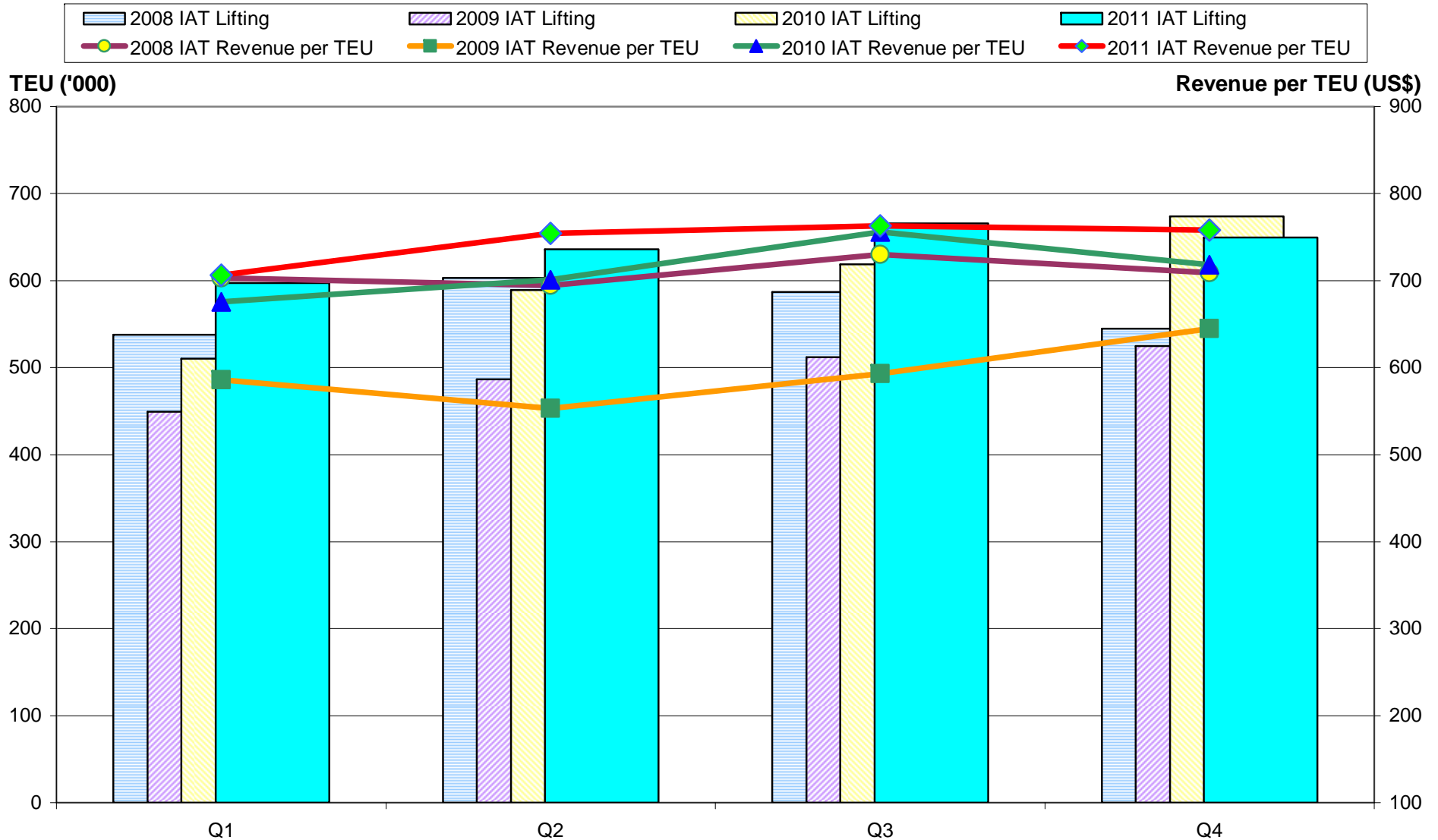


\*Note: Unaudited operational updates



Updated Jan 20<sup>th</sup>, 2012

# IAT Liftings and Revenue per TEU\*

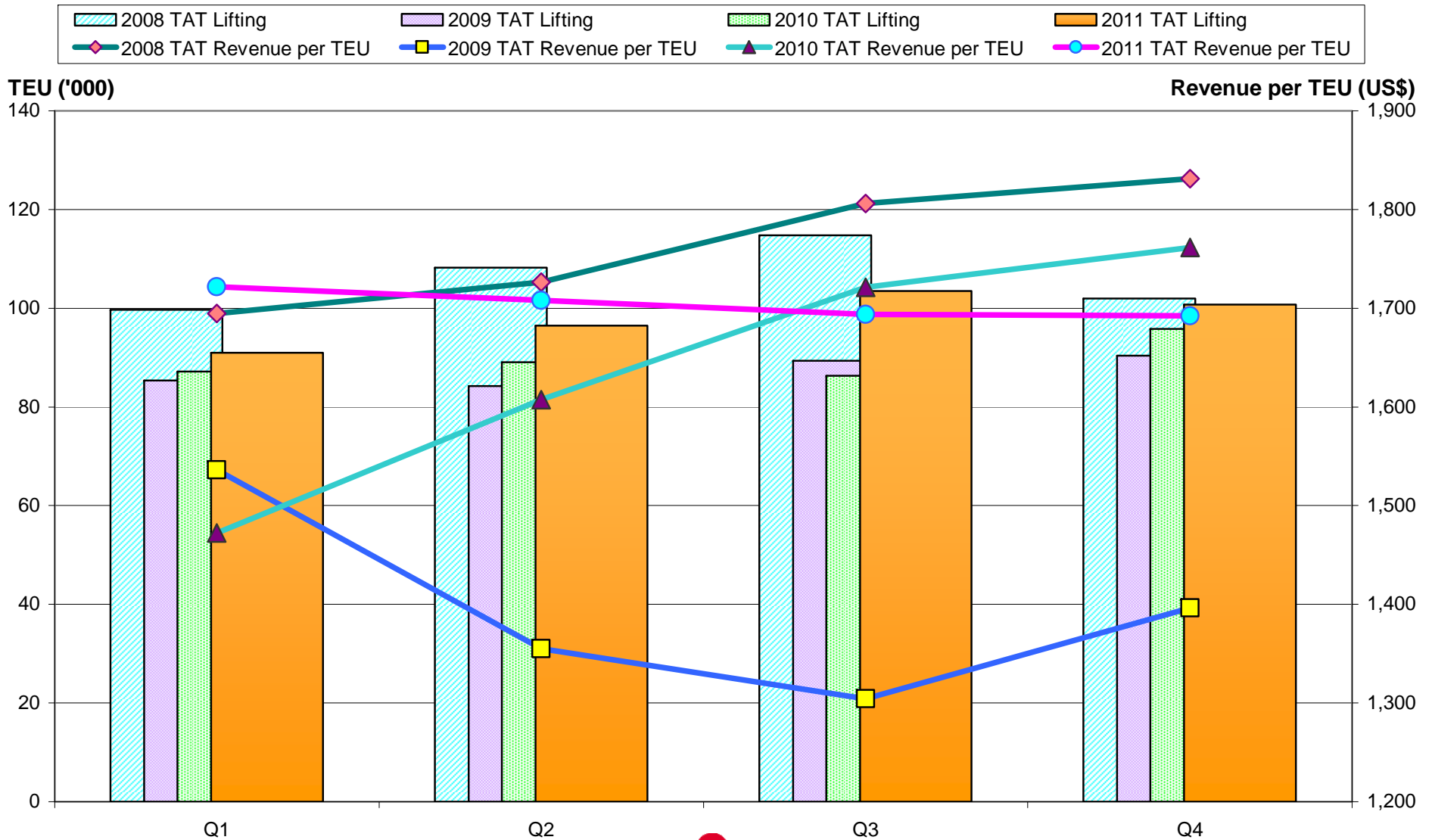


\*Note: Unaudited operational updates



Updated Jan 20<sup>th</sup>, 2012

# TAT Liftings and Revenue per TEU\*



\*Note: Unaudited operational updates



Updated Jan 20<sup>th</sup>, 2012

# OOCL Operational Update\*

	YTD					
	Q4 2011	Q4 2010	change	FY 2011	FY 2010	change
<b>LIFTINGS (TEU'S)</b>						
Trans-Pacific	316,953	318,977	-0.6%	1,230,135	1,224,858	0.4%
Asia-Europe	210,813	215,725	-2.3%	863,064	793,315	8.8%
Trans-Atlantic	100,733	95,775	5.2%	391,577	358,262	9.3%
Intra-Asia/Australasia	649,635	673,602	-3.6%	2,548,361	2,391,237	6.6%
<b>TOTAL ALL SERVICES</b>	<b>1,278,134</b>	<b>1,304,079</b>	<b>-2.0%</b>	<b>5,033,137</b>	<b>4,767,672</b>	<b>5.6%</b>
<b>TOTAL REVENUES</b> (US\$ '000)						
Trans-Pacific	454,870	540,963	-15.9%	1,896,406	2,035,122	-6.8%
Asia-Europe	230,331	325,335	-29.2%	1,064,000	1,283,007	-17.1%
Trans-Atlantic	170,480	168,708	1.1%	667,005	588,679	13.3%
Intra-Asia/Australasia	492,420	483,630	1.8%	1,901,921	1,708,560	11.3%
<b>TOTAL ALL SERVICES</b>	<b>1,348,101</b>	<b>1,518,636</b>	<b>-11.2%</b>	<b>5,529,332</b>	<b>5,615,368</b>	<b>-1.5%</b>
<b>REVENUE PER TEU (US\$)</b>						
Trans-Pacific	1,435	1,696	-15.4%	1,542	1,662	-7.2%
Asia-Europe	1,093	1,508	-27.5%	1,233	1,617	-23.7%
Trans-Atlantic	1,692	1,762	-4.0%	1,703	1,643	3.7%
Intra-Asia/Australasia	758	718	5.6%	746	715	4.3%
<b>TOTAL ALL SERVICES</b>	<b>1,055</b>	<b>1,165</b>	<b>-9.4%</b>	<b>1,099</b>	<b>1,178</b>	<b>-6.7%</b>

\*Note: Unaudited operational updates



Updated Jan 20<sup>th</sup>, 2012

# OOCL Operational Update\*

	Q4 2011	Q4 2010	Q4 11 Vs Q4 10 change	Q4 2009	Q4 11 Vs Q4 09 change
<b>LIFTINGS (TEU'S)</b>					
Trans-Pacific	316,953	318,977	-0.6%	306,055	3.6%
Asia-Europe	210,813	215,725	-2.3%	174,959	20.5%
Trans-Atlantic	100,733	95,775	5.2%	90,400	11.4%
Intra-Asia/Australasia	649,635	673,602	-3.6%	525,021	23.7%
<b>TOTAL ALL SERVICES</b>	<b>1,278,134</b>	<b>1,304,079</b>	<b>-2.0%</b>	<b>1,096,435</b>	<b>16.6%</b>
<b>TOTAL REVENUES (US\$ '000)</b>					
Trans-Pacific	454,870	540,963	-15.9%	383,926	18.5%
Asia-Europe	230,331	325,335	-29.2%	221,550	4.0%
Trans-Atlantic	170,480	168,708	1.1%	126,211	35.1%
Intra-Asia/Australasia	492,420	483,630	1.8%	338,502	45.5%
<b>TOTAL ALL SERVICES</b>	<b>1,348,101</b>	<b>1,518,636</b>	<b>-11.2%</b>	<b>1,070,189</b>	<b>26.0%</b>
<b>REVENUE PER TEU (US\$)</b>					
Trans-Pacific	1,435	1,696	-15.4%	1,254	14.4%
Asia-Europe	1,093	1,508	-27.5%	1,266	-13.7%
Trans-Atlantic	1,692	1,762	-4.0%	1,396	21.2%
Intra-Asia/Australasia	758	718	5.6%	645	17.5%
<b>TOTAL ALL SERVICES</b>	<b>1,055</b>	<b>1,165</b>	<b>-9.4%</b>	<b>976</b>	<b>8.1%</b>

\*Note: Unaudited operational updates



Updated Jan 20<sup>th</sup>, 2012

# OOCL Operational Update\*

	Q4 11	QoQ change	Q3 2011	QoQ change	Q2 2011	QoQ change	Q1 2011	QoQ change
<b>LIFTINGS (TEU'S)</b>								
Trans-Pacific	316,953	0.6%	314,916	4.3%	301,833	1.8%	296,433	-7.1%
Asia-Europe	210,813	-8.9%	231,505	3.1%	224,572	14.5%	196,174	-9.1%
Trans-Atlantic	100,733	-2.6%	103,436	7.2%	96,471	6.1%	90,937	-5.1%
Intra-Asia/Australasia	649,635	-2.4%	665,639	4.7%	635,854	6.5%	597,233	-11.3%
<b>TOTAL ALL SERVICES</b>	<b>1,278,134</b>	<b>-2.8%</b>	<b>1,315,496</b>	<b>4.5%</b>	<b>1,258,730</b>	<b>6.6%</b>	<b>1,180,777</b>	<b>-9.5%</b>
<b>TOTAL REVENUES (US\$ '000)</b>								
Trans-Pacific	454,870	-6.3%	485,518	0.6%	482,592	1.9%	473,426	-12.5%
Asia-Europe	230,331	-15.3%	272,074	-4.1%	283,753	2.1%	277,842	-14.6%
Trans-Atlantic	170,480	-2.7%	175,189	6.3%	164,785	5.3%	156,551	-7.2%
Intra-Asia/Australasia	492,420	-3.0%	507,795	5.8%	479,756	13.7%	421,950	-12.8%
<b>TOTAL ALL SERVICES</b>	<b>1,348,101</b>	<b>-6.4%</b>	<b>1,440,576</b>	<b>2.1%</b>	<b>1,410,886</b>	<b>6.1%</b>	<b>1,329,769</b>	<b>-12.4%</b>
<b>REVENUE PER TEU (US\$)</b>								
Trans-Pacific	1,435	-6.9%	1,542	-3.6%	1,599	0.1%	1,597	-5.8%
Asia-Europe	1,093	-7.0%	1,175	-7.0%	1,264	-10.7%	1,416	-6.1%
Trans-Atlantic	1,692	-0.1%	1,694	-0.8%	1,708	-0.8%	1,722	-2.3%
Intra-Asia/Australasia	758	-0.7%	763	1.1%	755	6.8%	707	-1.5%
<b>TOTAL ALL SERVICES</b>	<b>1,055</b>	<b>-3.7%</b>	<b>1,095</b>	<b>-2.3%</b>	<b>1,121</b>	<b>-0.4%</b>	<b>1,126</b>	<b>-3.3%</b>

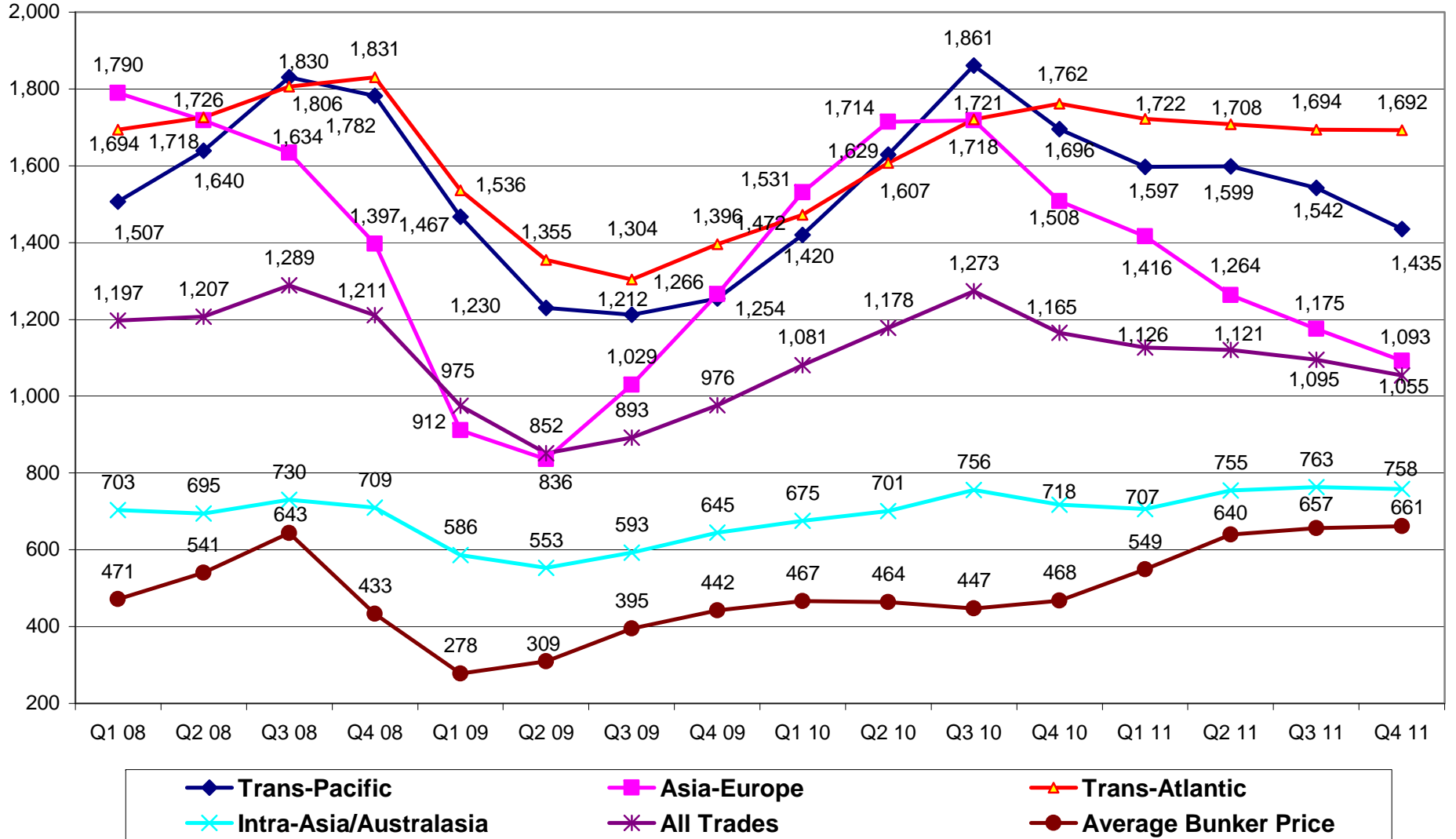
\*Note: Unaudited operational updates



Updated Jan 20<sup>th</sup>, 2012

# OOCL Average Revenue / TEU\*

Revenue Per TEU (US\$)



\*Note: Unaudited operational updates



Updated Jan 20<sup>th</sup>, 2012

# Disclaimer

The information provided is for reference only and includes data obtained from sources provided by the relevant information provider(s) and is subject to change without notice. Orient Overseas (International) Limited (“OOIL”) and its affiliates, and the concerned information provider(s), make no representation and accept no responsibility as to the accuracy, completeness, timeliness and fitness for a particular purpose and expressly disclaims any liability whatsoever for any loss whatsoever arising from or in reliance upon the whole or any part of the information. This information is neither a recommendation, an offer to buy, sell or trade in nor solicitation of an offer to buy, sell or trade in any investment. It is not intended to be a statement concerning investment, legal, tax, accounting financial or other professional or expert advice and should not be relied upon as such.

The information may include forward-looking statements about the operations, operatives and financial results of OOIL. Such statements are inherently subject to uncertainties arising from a variety of factors.



**THANK YOU**